

## In This Issue:

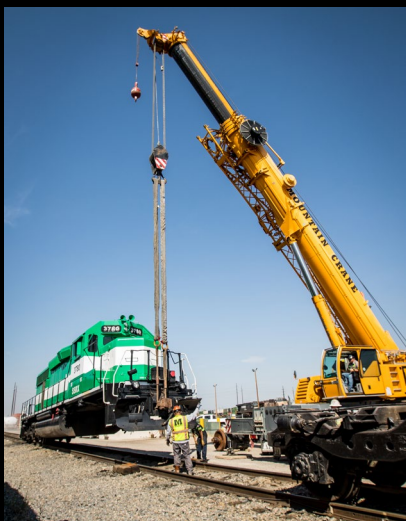
## Plant Pros

+ 02

+ Refinery Work: 02

+ Drone Mapping: 04

+ Contest Page: 05



## Looking Back ... 2018

When the locomotive needs a lift! Our Liebherr 200 ton, AT crane did some heavy lifting for this 112,000 lb train that needed a new traction motor put in.

## Enter to Win!

Oakley Backpack



+ 05



## Refinery Expansion



Safety is always a concern in everything we do, but especially in live operating plants. From ground bearing pressure to rigging capacities and environmental hazards, everything needs to be checked and double checked to ensure a safe lift. With years of experience in these type of projects, and elite operators, Mountain has the right team for the most challenging projects.



Rob Pikus 9-02-76 - 7-29-23



Rob Pikus, a longtime friend of Mountain Crane, passed away Saturday, July 29, 2023.

Rob was the previous owner of Pikus Concrete, a brilliant businessman, and dear friend to our owner, Paul Belcher. We express our sincere condolences to the Belcher and Pikus families, and many people in the construction industry who knew and loved Rob.

## SAFETY SCHOLARSHIP



### “What Safety Means to Me”

Anyone Seeking Higher Education  
In Any Trade or Field is Eligible!

1st Place: \$1,000  
2nd Place: \$500

[CLICK HERE](#)  
TO APPLY &  
FIND OUT MORE!

# Advanced Drone Capabilities



UAS Licensed Drone Pilot

Equipped with state-of-the-art features, Mountain's engineering team is proud to add advanced drone capabilities to our toolkit. The DJI Matrice enables our team to conduct efficient aerial surveys, and identify potential issues in the pre-planning phase of any project.

Equipped with three different high-res cameras and thermal sensors, we are able to provide 3D modeling of the site and capture even the most detailed visual data from safe flying distances.

For cell towers, refineries, plants and turbine maintenance we are able to provide inspections and safety assessments.

The drone's LiDAR camera also has the capability to work in complex environments, capturing precise data even in areas with extreme terrain or dense foliage. Once the images are captured our engineering team can provide mapping and 3D modeling for any project.

## O.P.S.S



## Safety Strong, Safety Share

"With hot temperature upon us, always take the time to stay hydrated. Drink plenty of water throughout the day and be aware of the symptoms of dehydration. If you are feeling dizzy or fatigued, let others know so that no harm or accident may occur. It's also important to look out for other members of your crew who may be showing signs of dehydration."

Bryce Olsen, Field Safety Manager



The core of Mountain is a top notch crew who is committed to SAFETY and executing every job with professionalism and precision. We are proud to be Mountain strong.



## Click to Win!

### August Contest

⊕ Oakley "Kitchen Sink" Backpack

## CONTACT US

📍 393 S. 2650 West  
Salt Lake City, UT 84104

✉ [www.mountaincrane.com](http://www.mountaincrane.com)

📷 @mountaincrane

📞 801.282.3330

