



M MOUNTAIN

NEWSLETTER

MARCH 2020

TOP NEWS INSIDE

- OLYMPIC CAULDRON - 02
- POWER PLANT - 03
- LOOKING BACK - 03
- CONTEST PAGE - 04

ENTER TO WIN!!!!

2 COURT-SIDE JAZZ TICKETS



MARCH 8th,
INTERNATIONAL
WOMEN'S DAY



WE GIVE THANKS TO THE GREAT
WOMEN OF MOUNTAIN CRANE

M MOUNTAIN



MOVING A LANDMARK



A major expansion is underway at the Rice Eccles Stadium at the University of Utah. The area which has been the home of the 2002 Olympic Cauldron and the site of the Winter Olympic games opening & closing ceremonies will be under construction for the next year & a half. During this time the cauldron will be refurbished and eventually be brought back to the stadium & placed in a new location. In front of a large group of reporters, cameras & helicopters, our team moved the 47,000 lb, 72 foot cauldron. Our 350 ton and 275 ton cranes picked and tripped the tower. It was then set on a trailer to be hauled away.





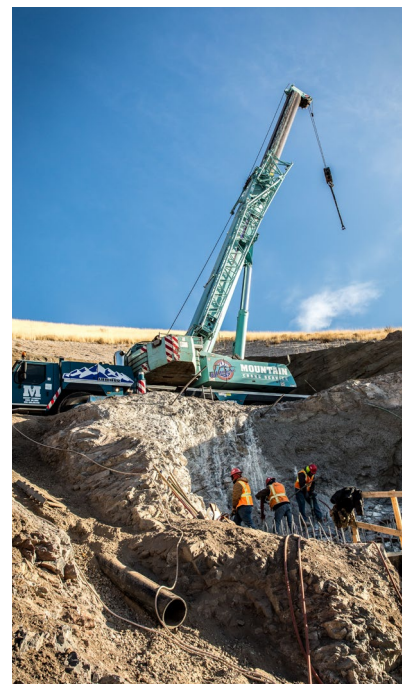
POWER PLANT PLACEMENT

Our 275 ton, AT crane placed two switch gear housings for the local power company recently. Each piece weighing approximately 55 k lbs, was hauled in and carefully set in place for storage.



LOOKING BACK ●●●●

Amazing views and frigid temps were unavoidable on this site in 2017. Our LTM 1220 placed several pipes for a new water system and hoisted construction equipment down the cliff for workers below.



MOUNTAIN STRONG



The core of Mountain is a top notch crew who is committed to SAFETY and executing every job with professionalism and precision. We are proud to be Mountain strong.





MARCH CONTEST:

- 2 Court-side tickets
- Jazz vs Nuggets, April 14th



CLICK HERE TO WIN!

CONTACT US

-  393 S Monterey St. Salt Lake City, UT 84104
-  www.mountaincrane.com
-  [@mountaincrane](https://www.instagram.com/mountaincrane)
-  801.282.3330

