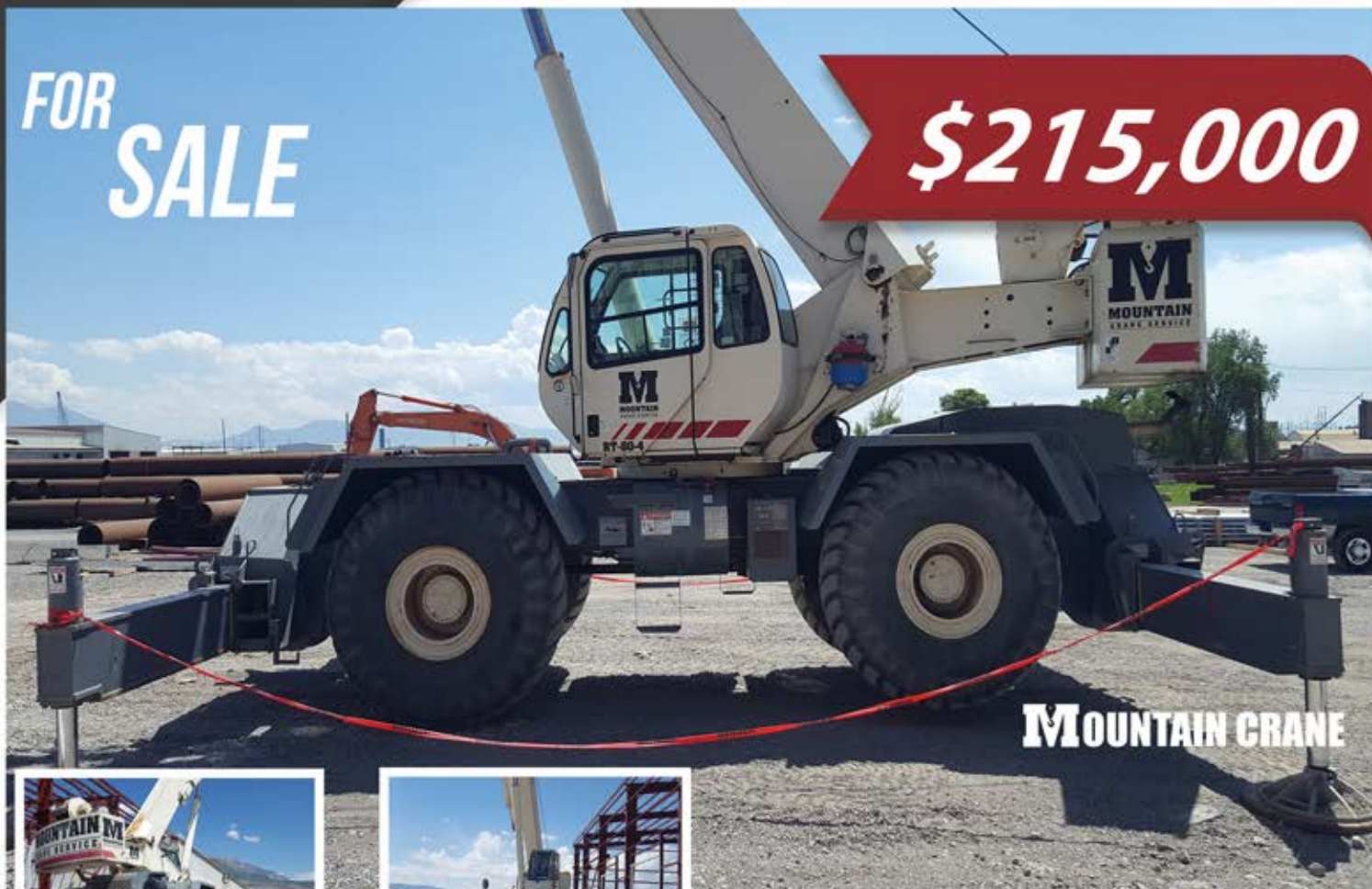


**FOR
SALE**

\$215,000



FACTS AND FEATURES

Asset #	RT-80-6	Main Boom Length:	40' - 126' (4)
Serial #	15218	Fixed Jib Length:	33' - 57' Offsettable
Year:	2007	Counterweight:	15,200
Make:	Terex	Block:	80 Ton 5 Sheave
Model	RT780	Ball:	6.2 Ton
Engine Make:	Cummins	Rope:	3/4"
Engine Model:	QSB 6.7 L	Hours:	6360
Tire Size:	29.5 X 25		



801.282.3330

393 S Monterey St. Salt Lake City, UT 84104

contact@mountaincrane.com

www.mountaincrane.com

CONTACT:

KATIE ODOM



435.659.5191



katie@mountaincrane.com