



Mountain Crane Service

Reaching Higher—Safety. Integrity. Excellence.

www.mountaincrane.com

(801) 282-3330 or (866) 686-3330

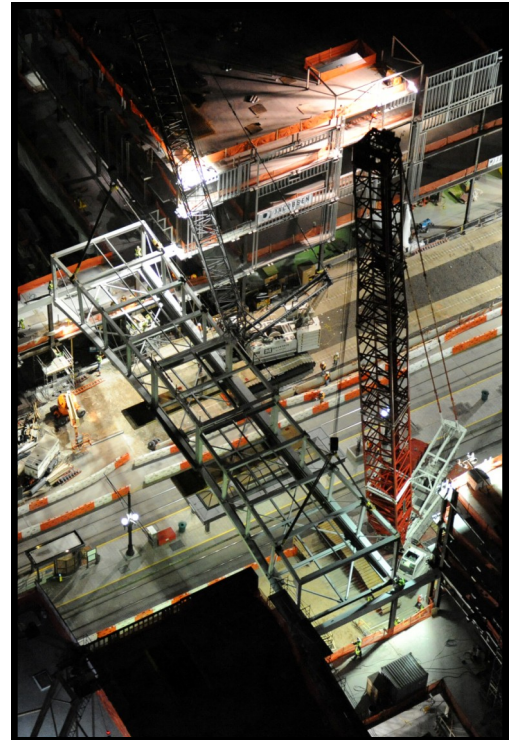
March 2010



City Creek Sky Bridge

Mountain Crane Service teamed up with SME Steel and Jacobsen Construction to set the Sky Bridge between City Creek Blocks 75 and 76 this past weekend. This tandem pick utilized Mountain Crane's Liebherr LR1600/2 (660 ton) and Link Belt LS348 (300 ton) crawler cranes to walk the 315,000 lb. steel bridge into place.

Preparation for this project required extensive engineering in a cooperative effort between Mountain Crane and SME. The image below is a screen shot from the 3-D project animation prepared by Jared Belcher (Mountain Crane).



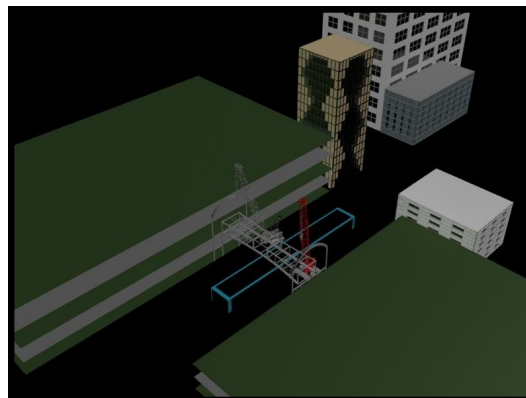
Inside this Issue:

- City Creek Sky Bridge
- I-15 Pioneer Crossing
- Project Walkthroughs
- Safety Excellence

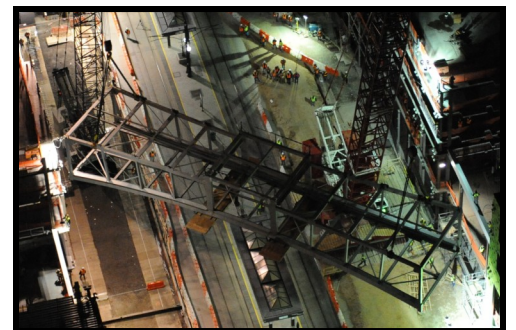


Enter to Win

[Enter to win](#) a \$50 Cabela's Gift Card from Mountain Crane. E-mail marie@mountaincrane.com. Winner to be announced in April newsletter.



Many thanks to Mark Mundy (SME), Rob Hartelust (Jacobsen), Norm Litz (Jacobsen), and Mark Chavez (Jacobsen) for making the job go as smoothly and safely as possible.



Due to the close proximity to UTA TRAX, mobilization and assembly of each crane was restricted to four hours each night. The Mountain Crane Service team, led by Travis Horton and Tyson Allen, built up each piece of equipment without mishap and ahead of schedule.

The project will be featured on [National Geographic's "World's Toughest Fixes"](#) later this fall.



Pioneer Crossing



Mountain Crane set the first group of bridge girders for the second overpass at Pioneer Crossing in American Fork earlier this month.

These girders, made by Hanson Eagle Precast, each weigh over 240,000 lbs. and require two crawler cranes to unload them from the specialty heavy haul equipment they are transported to site with. The girders are then walked into place where they are set on temporary abutments prepared by Kiewit.

These bridge girders and large crawler cranes were set up along the freeway and could be seen by passersby on their daily commute. Photos courtesy of Kiewit.



THE LIEBHERR WILL PICK THE GIRDER OFF THE TRAILER AT A 39° RADIUS. AS THE TWO CRANES CRAWL INTO SET POSITION, THE LIEBHERR WILL BOOM OUT (MAX 87°) AS NEEDED TO AVOID CONTACT WITH THE LINK-BELT BOOM AND THE GIRDER AS THE ANGLE OF THE GIRDER INCREASES.

QUICK REF.	
CRANE CONFIG.	LINK-BELT 298
BOOM LENGTH	128 ft
TIP HEIGHT	128 ft
BOOM ANGLE	75.0°
PICK RADIUS	28 ft
COUNTERWEIGHT	420,000 lbs
BASE LOAD	121,000 lbs
DEDUCTIONS	
LOAD BLOCK	3,900 lbs
WIRE ROPE	1,200 lbs
HOOKS	210 lbs
TOTAL LOAD	126,700 lbs
CRANE CAPACITY @ R	240,000 LBS
PERCENT CAPACITY	50%
DEGREE CHART	360°

QUICK REF.	
CRANE CONFIG.	LIEBHERR 18002
BOOM LENGTH	118 ft
TIP HEIGHT	118 ft
BOOM ANGLE	60.0°
PICK RADIUS (MAXIMUM)	82 ft
COUNTERWEIGHT	165,500 lbs
BASE LOAD	121,000 lbs
DEDUCTIONS	
LOAD BLOCK	3,900 lbs
WIRE ROPE	910 lbs
HOOKS	210 lbs
TOTAL LOAD	132,800 lbs
CRANE CAPACITY @ R	180,000 LBS
PERCENT CAPACITY	74%
DEGREE CHART	360°

TITLE: PIONEER CROSSING
 DATE: 3-3-10 CUSTOMER: KIEWIT
 SCALE: NS DWG #: SHEET: 2 of 3
 SALT LAKE CITY, UTAH 801.262.3330
 WWW.MOUNTAINCRANE.COM

Project such as these require that critical lift plans be approved before any work is performed. Mountain Crane Service can provide AutoCAD drawings such as these to ensure that work is performed as safely and efficiently as possible.

Project Walkthroughs

Mountain Crane Service is willing to walk through any upcoming job you may be bidding. We can also look over plans in your office.

Crane type and placement on site can be a key factor in the estimating process. We can provide suggestions that will save you TIME and MONEY in the long run.

Crane operators are also available to walk through a site before your project takes place.





Safety Excellence

Mountain Crane Service was recognized by the Specialized Carriers & Rigging Association once again for safety excellence in 2009. The company will be recognized among its peers at the SC&RA Annual Conference next month.



This award was created by the SC&RA to recognize its members in the crane and rigging industry who maintain the highest level of safety for their employees and equipment.

Utah's Largest Crane Fleet

- Crawler Cranes ■ Rough Terrain Cranes ■
- All Terrain Cranes ■ Hydraulic Truck Cranes
- Conventional Truck Cranes
- Carry Decks ■ Forklifts

Load charts for each of our cranes are available online at www.mountaincrane.com/fleet.

Next Month...



Mountain Crane Service provides a variety of services across the Intermountain West including plant shutdowns, steel, pre-cast panels, heating and cooling units, transformers, pools and hot tubs, demolition, mobile homes, windmills, and bridge girders, to name a few.

Mountain Crane Service employees receive continual training through Operating Engineers Local 3 and have their CCO Certification. We have a clean OSHA record and take pride in our safety record.

Check out our website at www.mountaincrane.com for more information.